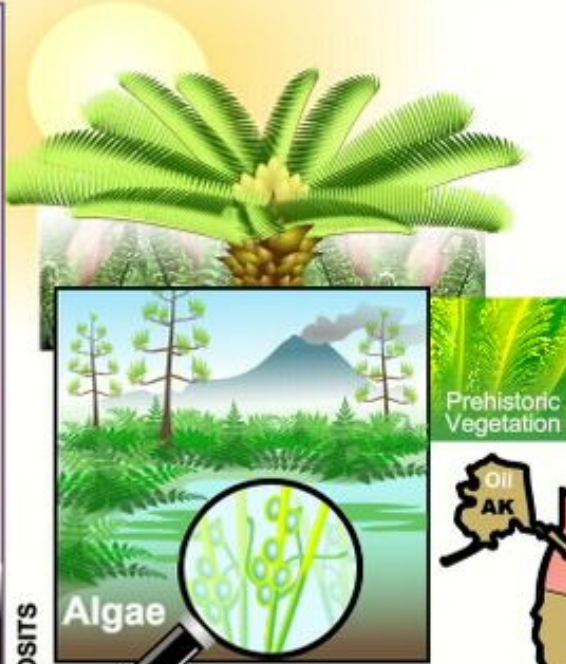
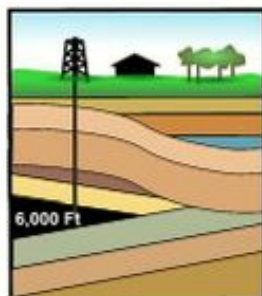
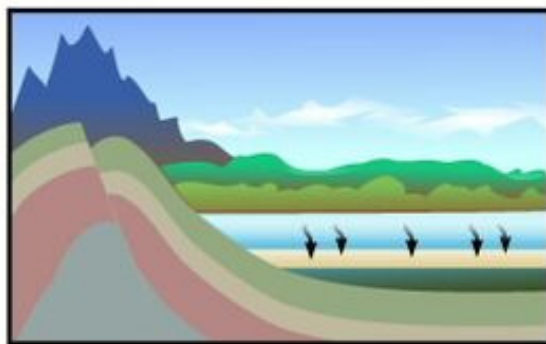


FOSSIL FUELS



Most fossil fuel deposits came from plants that lived during the Carboniferous period. Some coal deposits have been traced to the Cretaceous period during the time of *Tyrannosaurus Rex*. Over time dead plants and algae settled to the bottom of the ocean floor. This was then covered by silt and sand.

The deposits were buried deeper and deeper. The enormous pressure changed it into oil and gas. Solar energy has been locked into coal, oil, and gas and after extracted is transformed into thermal and light energy.



Oil and gas is extracted by drilling deep below the surface of the earth. This is then piped to refineries to produce various grades of oil and fuel.



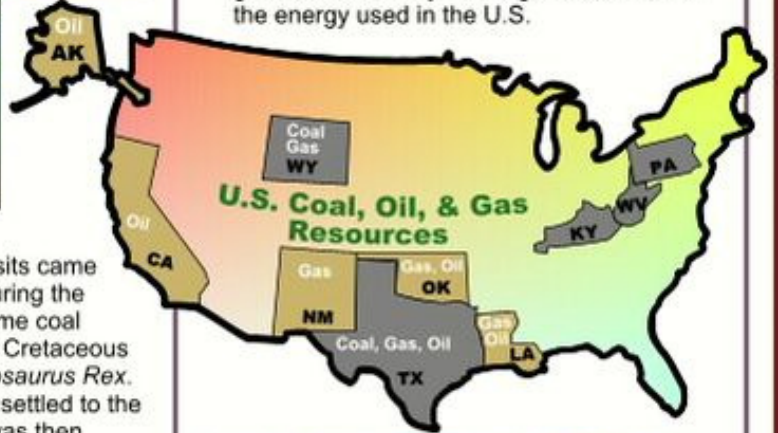
Non-renewable Energy Resources

Three Major Forms of Fossil Fuels



Coal Consumption (2000)

The U.S. is the world leader in known coal reserves, enough to last almost 300 years. About 90% of the coal produced is used to generate electricity. Coal generates half of the energy used in the U.S.



Oil Consumption

Petroleum is the leading source of energy used in the U.S. at 38%. Coal and natural gas provide about 22 percent of energy needs.

1 Barrel of Oil = 42 Gallons

