

MY FIRST ALPHABET



A a

Ark

C c

Cat

B b

Baby

D d

Dog



What do you see in this picture?

E e

Ear

G g

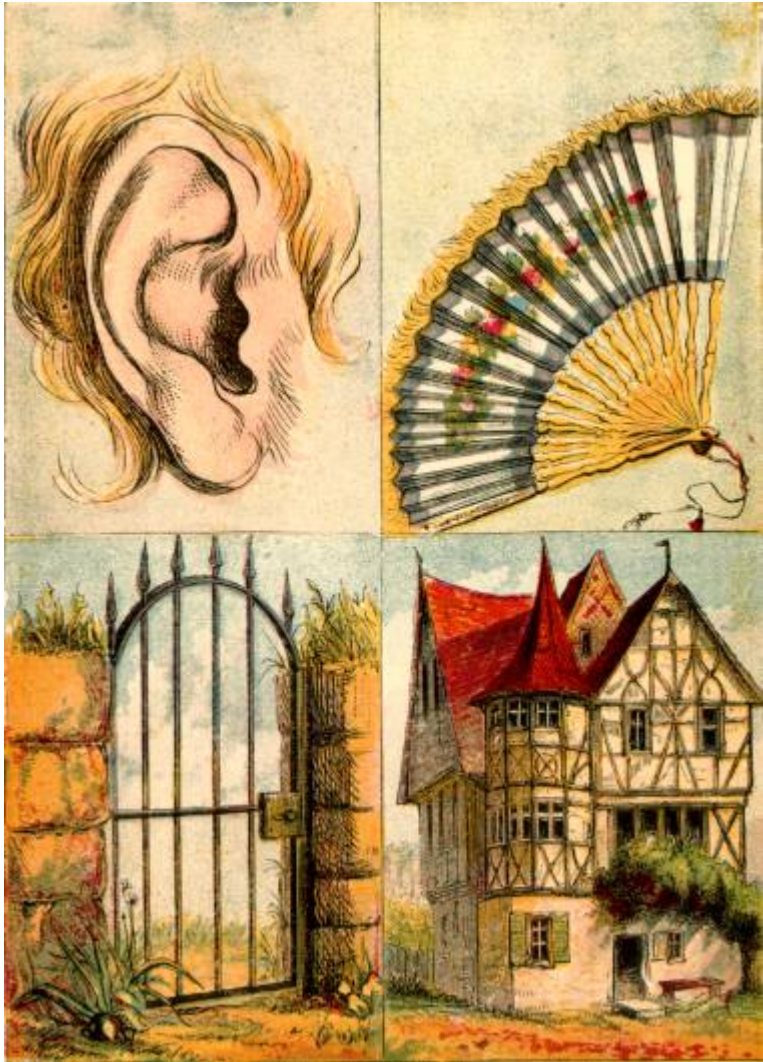
Gate

F f

Fan

H h

House



What do you see in this picture?

I i

K k

Inn

Key

L l

M m

Loaf

Man



What do you see in this picture?

N n

Nut

P p

Pan

O o

Owl

Q q

Queen



What do you see in this picture?

R r

Rat

T t

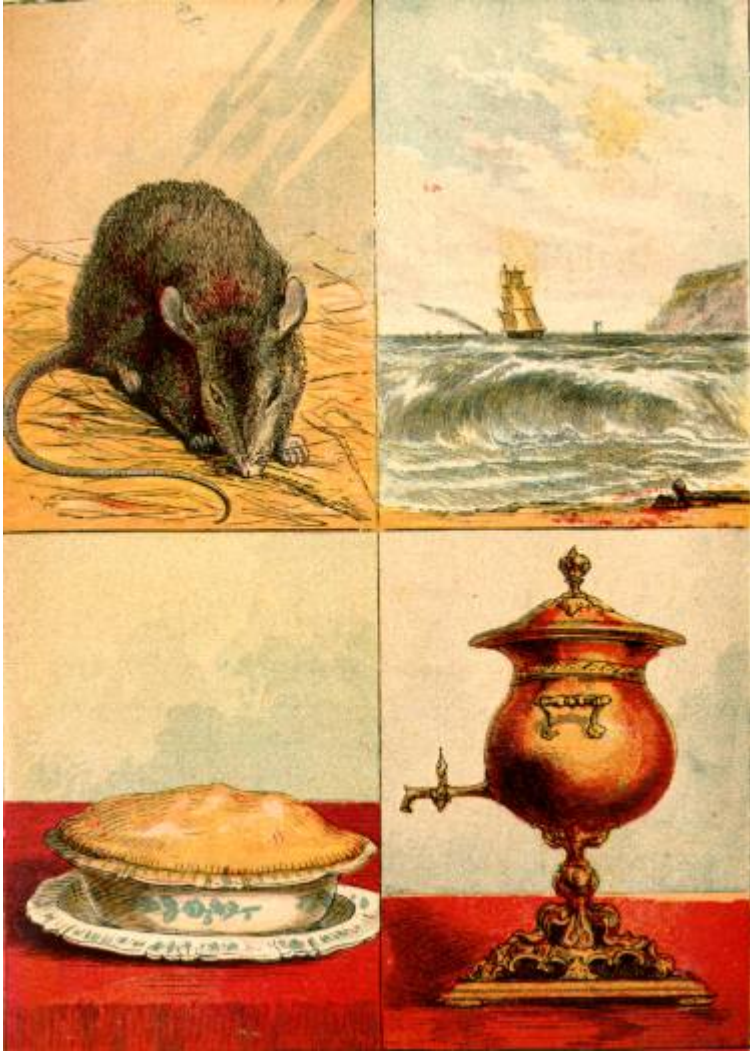
Tart

S s

Sea

U u

Urn



What do you see in this picture?

V v

W w

Vine

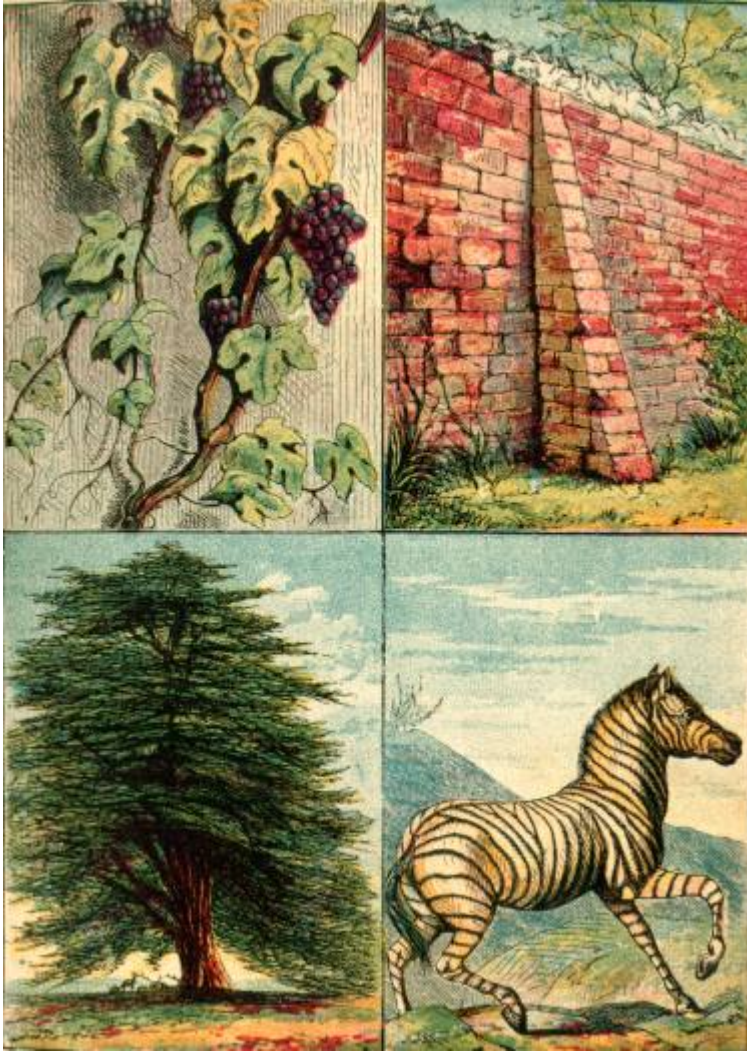
Wall

Y y

Z z

Yew

Zebra



What do you see in this picture?

