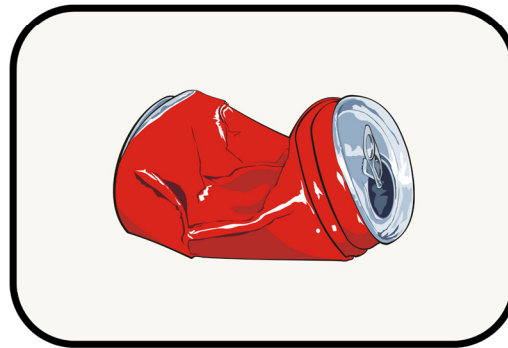
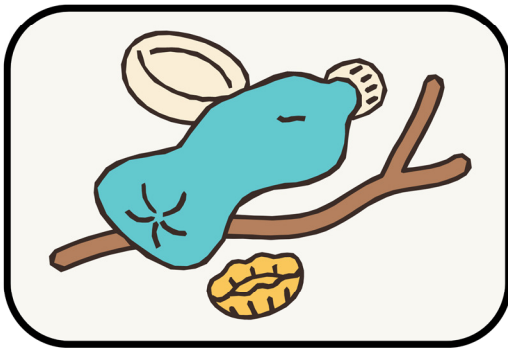


Name: \_\_\_\_\_

Grade: \_\_\_\_\_

# Trash to Treasure

Imagine that you are walking along the beach and you find  
2 pieces of trash. Draw what you could turn them into.  
It can be something useful or decorative.



A large, empty rectangular box with a dashed border, intended for drawing a creative reuse of the trash items shown in the top-left illustration.

A large, empty rectangular box with a dashed border, intended for drawing a creative reuse of the trash item shown in the top-right illustration.